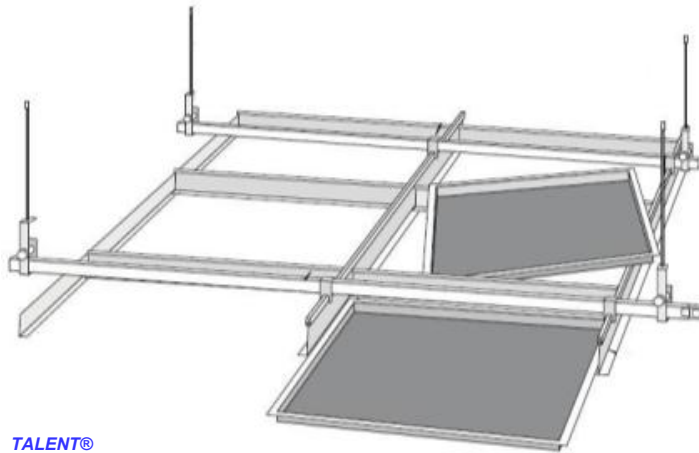


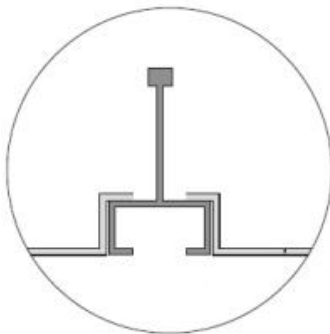
Lay In Ceiling & T-Grid Carrier

- Also called as Open Frame Ceiling
- Widely use in office building, conference room
- Easy to install and replace

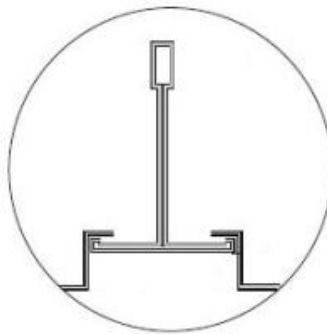
Installation



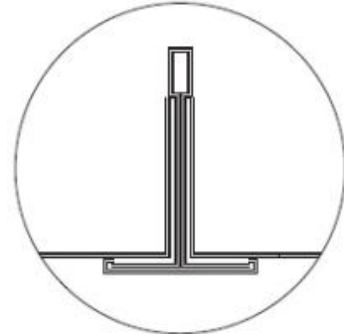
Cross Section



Flat leveled bedding
panel lay in groove
carrier



Lower leveled bedding
panel lay in flat carrier








Flat leveled bedding
panel lay on flat carrier

Specification

| | |
|----------------|--|
| Item No. | LI-A66 (600x600) |
| Material | Aluminum, Thickness (mm) 0.6, 0.7, 0.8, 0.9, 1.0 Steel, Thickness (mm) 0.50, 0.55, 0.6 |
| Surface Finish | Polyester powder coated OR Pre-painted available in wood or silver |
| Design | Plain OR Perforated. Check <u>PATTERN</u> for more options. |
| Performance | Acoustic, Fire performance |
| Dimension | Length x Width (mm) 300x300, 300x1200, 600x600, 600x1200, 1200x1200 Edge Height (mm) 8, 9, 10.5, 12, 17.5, 20, 30 |
| Edge Shape | Beveled OR Square |

Accessory

| | Item Name | Item Code | Picture |
|------------------------------|-------------------------------------|-----------|---|
| Essential | Main Tee Carrier | TG-M | Check <u>T-GRID</u> for more detail |
| | Cross Tee Carrier | TG-C | |
| | Suspension Bracket | SB-TG | |
| Optional (hanging system) | Expansion Screw (6/8mm) | HS-06/08 |   |
| | Suspension Bolt (6/8mm) | HS-16/18 | |
| | Screw(6/8mm) | HS-26/28 | |
| | 38# Main Carrier | HS-3 |   |
| | 38# Main Carrier Connector | HS-4 | |
| | 38# Main Carrier Suspension bracket | HS-5 |  |
| | Screw and Nut | HS-6 | |